

NEWSLETTER



Featured Property: “Pinnacle Industrial Park” FPL Florida First Site

- Prime site in Enterprise Charlotte Airport Park (ECAP)
- 60 acres (subdividable for smaller parcels)
- Zoned for industrial, logistics, commercial uses
- One of the largest parcels in the ECAP zone

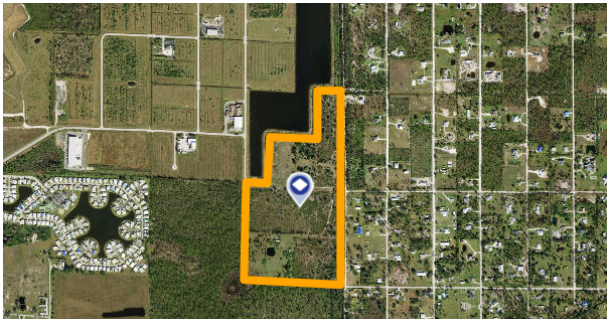
[View Full Property Listing](#)

Curio Collection Hilton Punta Gorda Rebrand Marks Major Milestone



Sunseeker Resort has officially joined Hilton’s Curio Collection, placing Charlotte County on the global map for luxury travel and business events. The move expands international visibility, attracts high-end visitors, and drives new opportunities for local businesses and conference tourism. Backed by Hilton’s worldwide network, the rebrand strengthens Charlotte County’s reputation for quality hospitality, sustainable growth, and a thriving year-round economy.

[Read Full Story](#)



CHARLOTTE COUNTY, FL
SITE SELECTOR NEWSLETTER:
OCTOBER 2025

FGCU and Babcock Ranch Launch Sustainability Research Hub

Florida Gulf Coast University and Babcock Ranch are partnering to create a new living laboratory focused on sustainability and innovation. The project expands Charlotte County’s research capacity, supports workforce development, and strengthens its position as a center for applied science in Southwest Florida.

[Read More](#)